

Report

Canadian Attitudes Toward the Ebola Outbreak

Survey of Canadians

June 8, 2026



Methodology

This week, we surveyed Canadians on their views on the new outbreak of Ebola, border measures and Canada's response.

Method

Online survey among respondents 18 years of age or older.
(Canadian sample: **n= 1,518**)

Respondents had the option of completing the survey in French and English and were randomly recruited using LEO's online panel.

Weighting

Results were weighted according to **age, gender, mother tongue, region, education and presence of children in the household** in order to ensure a representative sample of the Canadian population.

When

Data collection from **June 5 to June 7, 2026**.

Margin of error

For comparison purposes, a probability sample of this size yields a margin of error no greater than **±2.52%**, (19 times out of 20) for the sample.

Significant Differences

Data in bold **red** characters indicate a significantly lower proportion than that of other respondents. Conversely, data in bold **green** characters indicate a significantly higher proportion than that of other respondents.

Rounded data

The numbers presented have been rounded up. However, the numbers before rounding were used to calculate the sums presented and might therefore not correspond to the manual addition of these numbers.

Questions

Have questions about the data presented in this report? Please contact one of the following people:

Sebastien Dallaire (sdallaire@leger360.com)
Executive Vice-President, Eastern Canada

Andrew Enns (aenns@leger360.com)
Executive Vice-President, Central Canada

Steve Mossop (smossop@leger360.com)
Executive Vice-President, Western Canada

Notes

A more detailed methodology is presented in the Appendix.

The Most Accurate Polling Firm in Canada

CANADA 2025

LEGER POLL
Published on
April 26, 2025

OFFICIALS RESULTS
2025 Canada
Federal Election

| | | |
|--|-----|-------|
| | 43% | 43.7% |
| | 39% | 41.3% |
| | 8% | 6.3% |
| | 6% | 6.3% |
| | 2% | 1.2% |

BRITISH COLUMBIA 2024

LEGER POLL
Published on
October 18, 2024

OFFICIALS RESULTS
2024 British Columbia
Provincial Election

| | | |
|--------|-----|-----|
| | 46% | 45% |
| | 42% | 43% |
| | 9% | 8% |
| Others | 3% | 4% |

UNITED STATES 2024

LEGER POLL
Published on
November 4, 2024

OFFICIALS RESULTS
2024 United States
Presidential Election

| | | |
|--------|-----|-----|
| | 49% | 50% |
| | 49% | 48% |
| Others | 2% | 2% |

Key Highlights

Some of **the key highlights** of our survey...

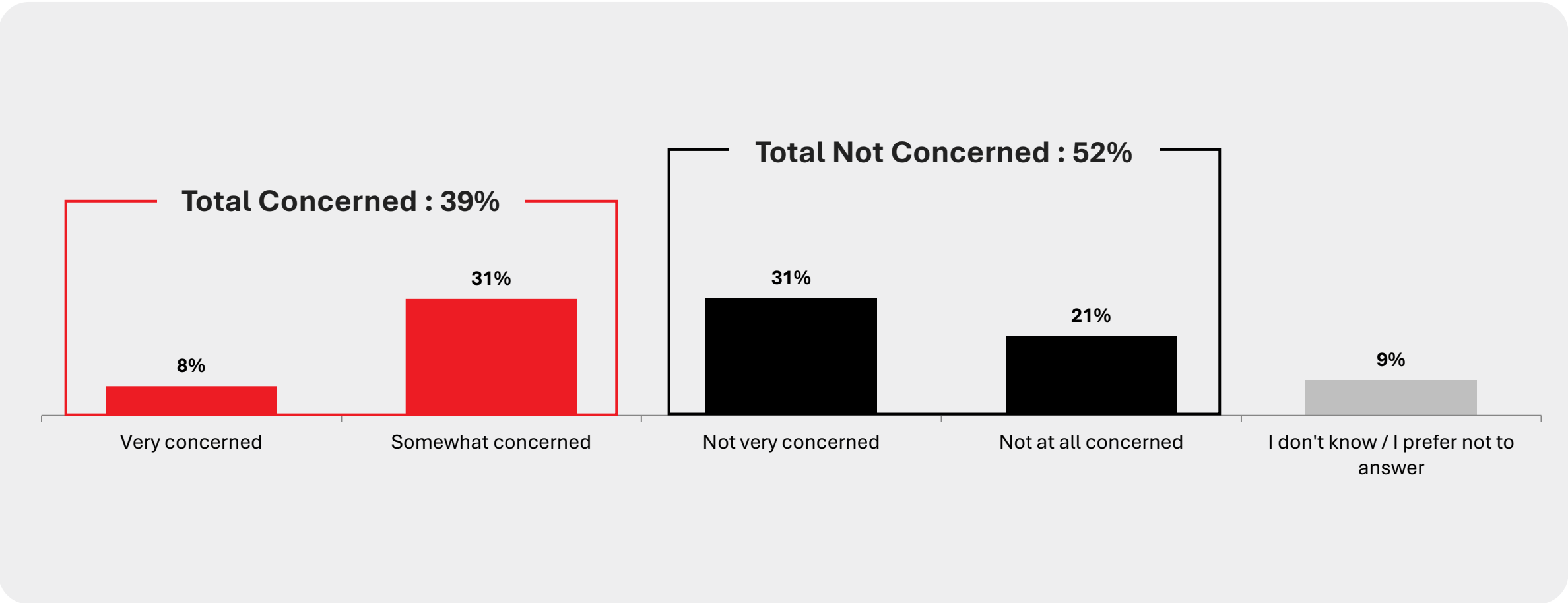
- **Canadians are more likely to be unconcerned than concerned about the current Ebola outbreak in Central Africa.** While 39% say they are concerned, a majority (52%) report being not very or not at all concerned. Concern is highest in Quebec (46%) and among Canadians aged 55 and older (42%).
- Despite half of respondents not being concerned, **Canadians overwhelmingly support precautionary border measures. More than eight in ten (85%) support the federal government's decision to temporarily restrict entry from countries most affected by the outbreak,** including a majority (54%) who strongly support the measure. Support is highest among Canadians aged 55 and older (92%) and those concerned about the Ebola outbreak (92%).
- When it comes to Canada's role in responding to the outbreak, Canadians favour a balanced approach. **Roughly equal proportions believe Canada should focus primarily on preventing Ebola from entering the country (36%) or pursue both domestic preparedness and international support efforts (35%).** Only 11% believe Canada should prioritize providing assistance abroad.
- **Canadians are divided on how confident they are that public health authorities can prevent Ebola from spreading during the FIFA World Cup.** While 43% are confident in authorities' ability to manage the risk, 40% are not confident, highlighting ongoing uncertainty about preparedness during large international events.
- **If Ebola concerns increase during the World Cup, mandatory health screening is the preferred response.** Four in ten Canadians (39%) would most support mandatory screening for some travelers or event workers, while far less favour limiting public gatherings (16%) or relying solely on public-health information and hygiene measures (11% each).

Detailed Results

Level of Concern About the Ebola Outbreak (1/2)

Q1. How concerned are you about the current Ebola outbreak in Central Africa?

Base: All respondents (n=1,518)



Level of Concern About the Ebola Outbreak (2/2)

Q1. How concerned are you about the current Ebola outbreak in Central Africa?

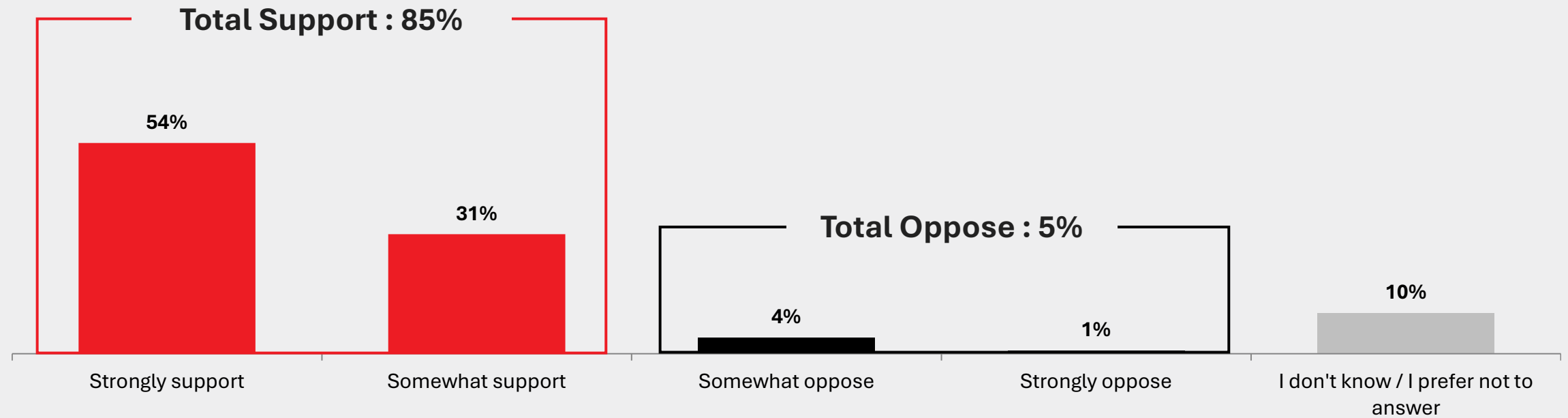
Base: All respondents (n=1,518)

| | Total CANADA | ATL | QC | ON | MB/SK | AB | BC | Male | Female | 18-34 | 35-54 | 55+ |
|----------------------------|--------------|-----|------------|------------|------------|-----|------------|------|--------|------------|------------|------------|
| Weighted n= | 1,518 | 103 | 353 | 592 | 98 | 165 | 206 | 739 | 779 | 397 | 492 | 629 |
| Unweighted n= | 1,518 | 101 | 407 | 603 | 126 | 129 | 152 | 789 | 729 | 444 | 453 | 621 |
| TOTAL CONCERNED | 39% | 40% | 30% | 46% | 30% | 37% | 38% | 41% | 37% | 39% | 34% | 42% |
| Very concerned | 8% | 9% | 5% | 9% | 3% | 7% | 10% | 8% | 8% | 9% | 6% | 8% |
| Somewhat concerned | 31% | 30% | 24% | 37% | 27% | 29% | 28% | 33% | 29% | 29% | 28% | 34% |
| TOTAL NOT CONCERNED | 52% | 50% | 62% | 45% | 59% | 53% | 54% | 52% | 52% | 46% | 56% | 52% |
| Not very concerned | 31% | 30% | 40% | 28% | 28% | 33% | 24% | 30% | 32% | 29% | 31% | 32% |
| Not at all concerned | 21% | 20% | 22% | 16% | 31% | 20% | 30% | 22% | 20% | 17% | 25% | 20% |
| DK / Refusal | 9% | 10% | 9% | 9% | 11% | 11% | 8% | 8% | 11% | 15% | 10% | 5% |

Views on Travel Restrictions During the Ebola Outbreak (1/2)

Q2. Do you support or oppose the Canadian government's decision to temporarily restrict entry from countries most affected by the Ebola outbreak?

Base: All respondents (n=1,518)



Views on Travel Restrictions During the Ebola Outbreak (2/2)

Q2. Do you support or oppose the Canadian government's decision to temporarily restrict entry from countries most affected by the Ebola outbreak?

Base: All respondents (n=1,518)

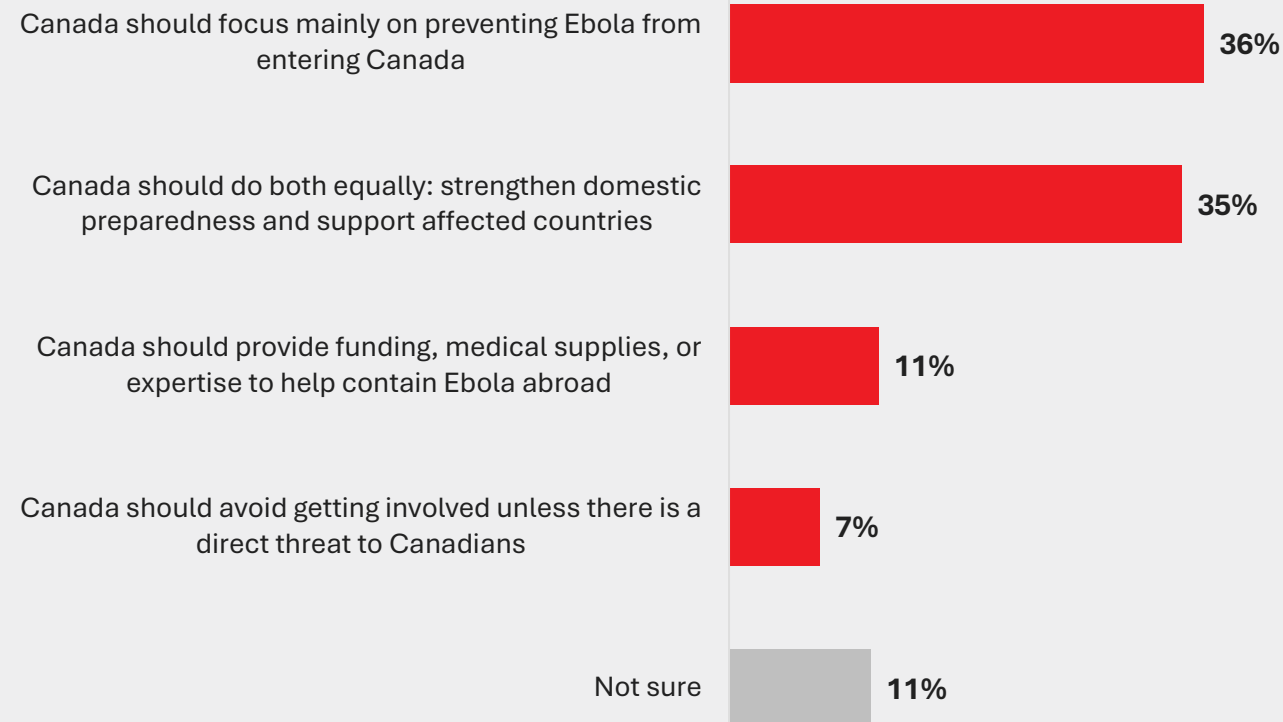
*Level of Concern
About the Ebola
Outbreak*

| | Total CANADA | ATL | QC | ON | MB/SK | AB | BC | Male | Female | 18-34 | 35-54 | 55+ | Concerned | Not concerned |
|----------------------|--------------|-----|-----|-----|-------|-----|-----|------|--------|-------|-------|-----|-----------|---------------|
| Weighted n= | 1,518 | 103 | 353 | 592 | 98 | 165 | 206 | 739 | 779 | 397 | 492 | 629 | 587 | 790 |
| Unweighted n= | 1,518 | 101 | 407 | 603 | 126 | 129 | 152 | 789 | 729 | 444 | 453 | 621 | 616 | 782 |
| TOTAL SUPPORT | 85% | 90% | 83% | 85% | 86% | 83% | 83% | 85% | 85% | 77% | 82% | 92% | 92% | 85% |
| Strongly support | 54% | 57% | 51% | 55% | 52% | 54% | 58% | 54% | 54% | 42% | 51% | 64% | 62% | 53% |
| Somewhat support | 31% | 33% | 32% | 31% | 35% | 30% | 25% | 31% | 31% | 35% | 31% | 28% | 30% | 32% |
| TOTAL OPPOSE | 5% | 4% | 5% | 5% | 3% | 8% | 5% | 6% | 4% | 6% | 6% | 3% | 4% | 7% |
| Somewhat oppose | 4% | 4% | 3% | 4% | 2% | 7% | 3% | 5% | 3% | 6% | 5% | 2% | 3% | 5% |
| Strongly oppose | 1% | 0% | 2% | 0% | 2% | 1% | 1% | 1% | 1% | 0% | 1% | 1% | 0% | 2% |
| DK / Refusal | 10% | 6% | 12% | 10% | 10% | 9% | 12% | 9% | 12% | 17% | 12% | 5% | 4% | 9% |

Views on Canada's Response to the Ebola Outbreak (1/2)

Q3. Which statement comes closest to your view of Canada's role in responding to the Ebola outbreak?

Base: All respondents (n=1,518)



Views on Canada's Response to the Ebola Outbreak (2/2)

Q3. Which statement comes closest to your view of Canada's role in responding to the Ebola outbreak?

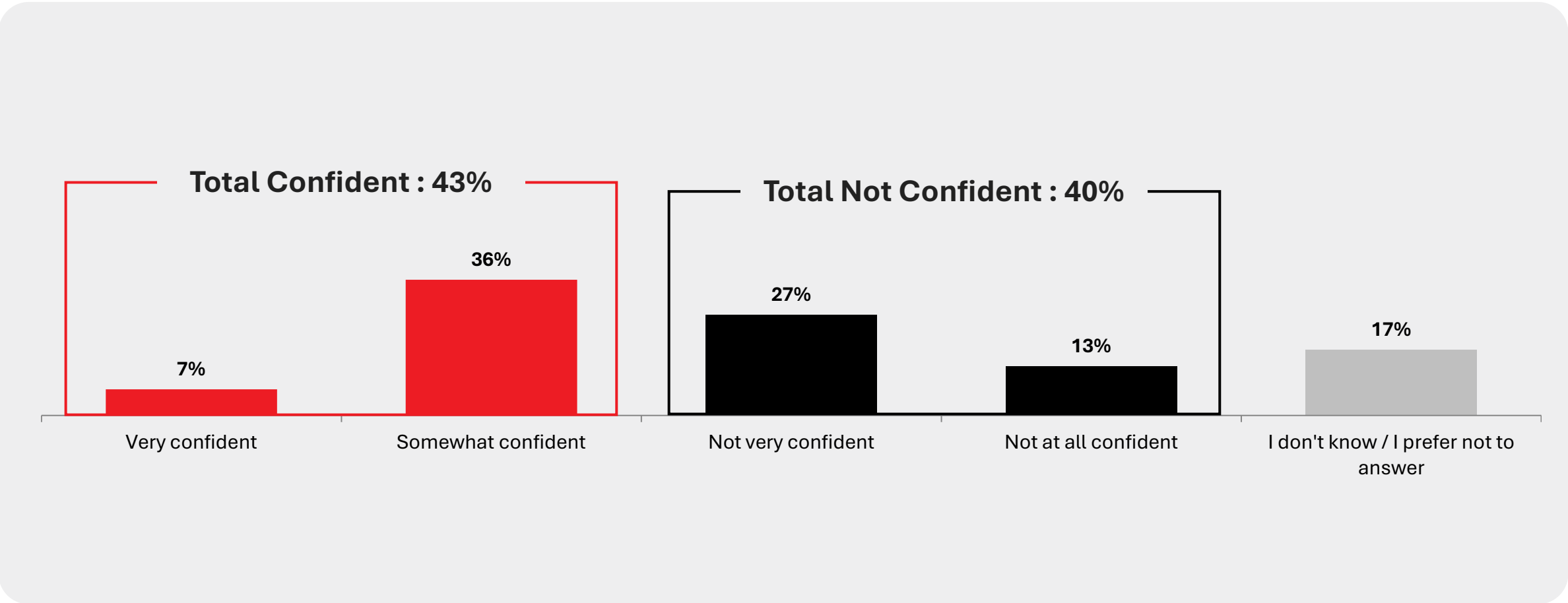
Base: All respondents (n=1,518)

| | Total CANADA | ATL | QC | ON | MB/SK | AB | BC | Male | Female | 18-34 | 35-54 | 55+ | Level of Concern About the Ebola Outbreak | | Support of Travel Restrictions | |
|--|--------------|------------|------------|------------|------------|------------|------------|------------|------------|------------|------------|------------|---|---------------|--------------------------------|------------|
| | | | | | | | | | | | | | Concerned | Not concerned | Support | Oppose |
| <i>Weighted n=</i> | 1,518 | 103 | 353 | 592 | 98 | 165 | 206 | 739 | 779 | 397 | 492 | 629 | 587 | 790 | 1,284 | 75 |
| <i>Unweighted n=</i> | 1,518 | 101 | 407 | 603 | 126 | 129 | 152 | 789 | 729 | 444 | 453 | 621 | 616 | 782 | 1,281 | 86 |
| Canada should focus mainly on preventing Ebola from entering Canada | 36% | 40% | 35% | 36% | 49% | 35% | 34% | 35% | 37% | 33% | 34% | 40% | 33% | 40% | 41% | 12% |
| Canada should do both equally: strengthen domestic preparedness and support affected countries | 35% | 34% | 34% | 35% | 19% | 39% | 39% | 32% | 37% | 29% | 34% | 39% | 43% | 32% | 38% | 19% |
| Canada should provide funding, medical supplies, or expertise to help contain Ebola abroad | 11% | 11% | 9% | 13% | 9% | 10% | 15% | 16% | 7% | 16% | 12% | 8% | 17% | 8% | 11% | 35% |
| Canada should avoid getting involved unless there is a direct threat to Canadians | 7% | 10% | 9% | 6% | 10% | 6% | 3% | 8% | 6% | 6% | 7% | 7% | 3% | 11% | 6% | 21% |
| Not sure | 11% | 5% | 13% | 11% | 12% | 10% | 8% | 10% | 12% | 16% | 14% | 5% | 4% | 9% | 4% | 13% |

Confidence in Preventing Ebola Spread During the FIFA World Cup (1/2)

Q4. The FIFA World Cup will bring millions of visitors to Canada, the United States and Mexico this summer. How confident are you that public health authorities can prevent Ebola from spreading during the tournament?

Base: All respondents (n=1,518)



Confidence in Preventing Ebola Spread During the FIFA World Cup (2/2)

Q4. The FIFA World Cup will bring millions of visitors to Canada, the United States and Mexico this summer. How confident are you that public health authorities can prevent Ebola from spreading during the tournament?

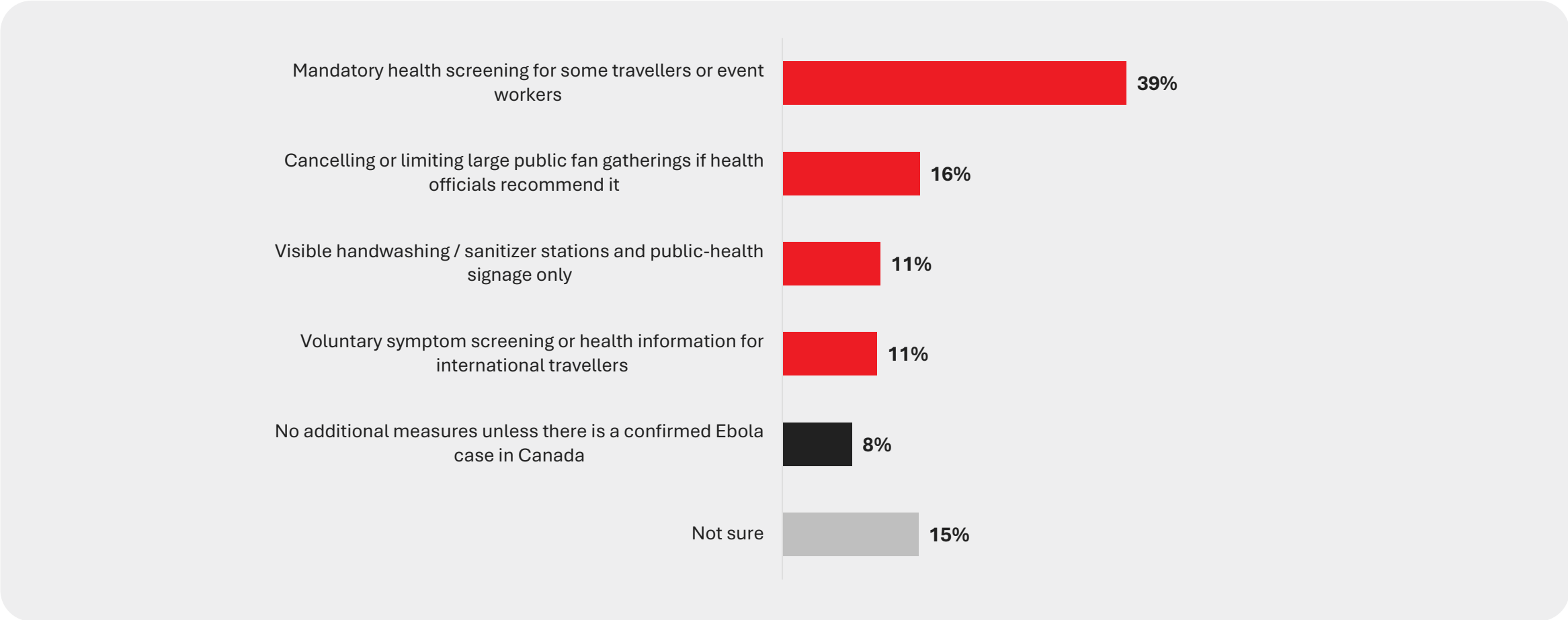
Base: All respondents (n=1,518)

| | Total CANADA | ATL | QC | ON | MB/SK | AB | BC | Male | Female | 18-34 | 35-54 | 55+ | Level of Concern About the Ebola Outbreak | | Support of Travel Restrictions | |
|----------------------------|--------------|-----|-----|-----|-------|-----|-----|------|--------|-------|-------|-----|---|---------------|--------------------------------|--------|
| | | | | | | | | | | | | | Concerned | Not concerned | Support | Oppose |
| Weighted n= | 1,518 | 103 | 353 | 592 | 98 | 165 | 206 | 739 | 779 | 397 | 492 | 629 | 587 | 790 | 1,284 | 75 |
| Unweighted n= | 1,518 | 101 | 407 | 603 | 126 | 129 | 152 | 789 | 729 | 444 | 453 | 621 | 616 | 782 | 1,281 | 86 |
| TOTAL CONFIDENT | 43% | 50% | 39% | 43% | 38% | 53% | 40% | 49% | 37% | 45% | 43% | 42% | 45% | 46% | 45% | 56% |
| Very confident | 7% | 8% | 5% | 9% | 2% | 11% | 4% | 9% | 5% | 8% | 7% | 6% | 9% | 6% | 7% | 10% |
| Somewhat confident | 36% | 42% | 34% | 34% | 36% | 42% | 36% | 40% | 32% | 36% | 36% | 35% | 36% | 39% | 38% | 46% |
| TOTAL NOT CONFIDENT | 40% | 42% | 36% | 42% | 41% | 35% | 42% | 37% | 43% | 33% | 40% | 44% | 44% | 39% | 42% | 34% |
| Not very confident | 27% | 31% | 26% | 28% | 30% | 20% | 26% | 24% | 29% | 23% | 28% | 28% | 29% | 27% | 29% | 19% |
| Not at all confident | 13% | 11% | 10% | 14% | 11% | 16% | 16% | 12% | 14% | 10% | 12% | 16% | 15% | 12% | 13% | 15% |
| DK / Refusal | 17% | 7% | 25% | 15% | 21% | 12% | 18% | 15% | 20% | 23% | 17% | 14% | 10% | 15% | 12% | 9% |

Preferred Ebola Prevention Measures During the FIFA World Cup (1/2)

Q5. If Ebola concerns increased during the FIFA World Cup, which measure would you most support at Canadian host-city events such as fan zones, airports, or stadiums?

Base: All respondents (n=1,518)



Preferred Ebola Prevention Measures During the FIFA World Cup (1/2)

Q5. If Ebola concerns increased during the FIFA World Cup, which measure would you most support at Canadian host-city events such as fan zones, airports, or stadiums?

Base: All respondents (n=1,518)

| | Total CANADA | ATL | QC | ON | MB/SK | AB | BC | Male | Female | 18-34 | 35-54 | 55+ | Level of Concern About the Ebola Outbreak | | Support of Travel Restrictions | |
|---|--------------|-----|-----|-----|-------|-----|-----|------|--------|-------|-------|-----|---|---------------|--------------------------------|--------|
| | | | | | | | | | | | | | Concerned | Not concerned | Support | Oppose |
| Weighted n= | 1,518 | 103 | 353 | 592 | 98 | 165 | 206 | 739 | 779 | 397 | 492 | 629 | 587 | 790 | 1,284 | 75 |
| Unweighted n= | 1,518 | 101 | 407 | 603 | 126 | 129 | 152 | 789 | 729 | 444 | 453 | 621 | 616 | 782 | 1,281 | 86 |
| Mandatory health screening for some travellers or event workers | 39% | 30% | 43% | 40% | 38% | 36% | 38% | 40% | 38% | 31% | 37% | 46% | 43% | 39% | 44% | 20% |
| Cancelling or limiting large public fan gatherings if health officials recommend it | 16% | 19% | 13% | 18% | 10% | 14% | 16% | 13% | 18% | 14% | 15% | 17% | 18% | 15% | 17% | 16% |
| Visible handwashing / sanitizer stations and public-health signage only | 11% | 13% | 7% | 12% | 10% | 13% | 13% | 12% | 11% | 16% | 10% | 9% | 10% | 12% | 12% | 10% |
| Voluntary symptom screening or health information for international travellers | 11% | 9% | 14% | 11% | 11% | 7% | 9% | 12% | 9% | 15% | 12% | 7% | 15% | 9% | 11% | 19% |
| No additional measures unless there is a confirmed Ebola case in Canada | 8% | 13% | 5% | 5% | 9% | 14% | 11% | 9% | 7% | 6% | 8% | 9% | 5% | 11% | 7% | 23% |
| Not sure | 15% | 15% | 18% | 14% | 23% | 15% | 13% | 14% | 17% | 18% | 18% | 12% | 8% | 15% | 9% | 13% |

Respondent Profile

Respondent profiles

(Base n=1,518)

The table below presents the Canadian distribution of respondents before weighting.

Gender

| | Unweighted | Weighted |
|--------|------------|------------|
| Male | 789 | 739 |
| Female | 729 | 779 |

Language (Mother Tongue)

| | Unweighted | Weighted |
|---------|--------------|--------------|
| French | 348 | 302 |
| English | 1,037 | 1,077 |
| Other | 132 | 139 |

Age

| | Unweighted | Weighted |
|----------|------------|------------|
| 18 to 34 | 444 | 397 |
| 35 to 54 | 453 | 492 |
| 55+ | 621 | 629 |

Province

| | Unweighted | Weighted |
|-----------------------|------------|------------|
| British Columbia | 152 | 206 |
| Alberta | 129 | 165 |
| Manitoba/Saskatchewan | 126 | 98 |
| Ontario | 603 | 592 |
| Quebec | 407 | 353 |
| Atlantic | 101 | 103 |

Our Credentials



Canada

Leger is a member of the [Canadian Research Insights Council \(CRIC\)](#), the industry association for the market/survey/insights research industry.



Europe

Leger is a member of [ESOMAR](#) (European Society for Opinion and Market Research), the global association of opinion polls and marketing research professionals.



America

Leger is also a member of the [Insights Association](#), the American Association of Marketing Research Analytics.



International

Leger is a member of the [Worldwide Independent Network of Market Research \(WIN\)](#), a global alliance of leading independent market research and polling firms that collaborate to share expertise, methodologies, and insights across diverse markets.

Our services

Leger

Marketing research and polling

Customer Experience (CX)

Strategic and operational customer experience consulting services

Leger Analytics (LEA)

Data modelling and analysis

Leger Opinion (LEO)

Panel management

Leger Communities

Online community management

Leger Digital

Digital strategy and user experience

International Research

Worldwide Independent Network (WIN)

300
employees

185
consultants

8
offices

MONTRÉAL | QUÉBEC |
TORONTO | WINNIPEG
EDMONTON | CALGARY |
VANCOUVER | NEW YORK

Leger

The science of people

leger360.com